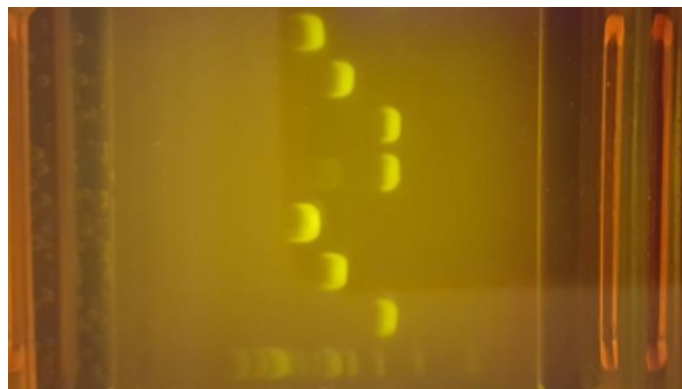


BIOTECHNOLOGY: MIDORI Green Xtra DNA stain

A sensitive DNA stain for use in electrophoresis, Midori Green Xtra is supplied as non-hazardous concentrate that is added to the agarose solution just before pouring into the gel tray. We offer Midori Green Xtra® DNA stain for use with the blueGel electrophoresis chamber (G40.04).



G40.04 blueGel electrophoresis chamber



DNA bands stained with Midori Green Xtra

Sterilisation and sterile techniques are very important for the basics of microbiology. When you prepare media for bacterial or fungal growth you need to know that the media is clean and sterile, and that the only introduction to it is the one that you are about to make. For this reason we sterilise our media after it has been made, and we use aseptic techniques when we introduce specific micro-organisms.

The blue LED light source in the base of the blueGel unit provides the excitation illumination to enable visualisation of the DNA. When complexed with DNA, Midori Green Xtra absorbs blue light ($\lambda_{\text{max}}=509\text{nm}$) and fluoresces brightly at 480nm. Midori Green Xtra DNA stain is light sensitive. For maximum shelf life, wrap the container in foil to shield the contents from light during storage. Avoid preparing gels more than 4 hours in advance.

Product details:

- **Product Code:** GREEN
- **Storage:** Store at 4°C, protected from light.
- **Use:** Supplied as 50µL of a 10,000X concentrate in DMSO. Add 2µL per 20mL of Agarose solution. Refer to the blueGel user manual for further information.
- **Safety:** MIDORI Green Xtra DNA Stain is non-carcinogenic and, according to the Ames test, it causes significantly fewer mutations than Ethidium Bromide. Midori Green Xtra may irritate skin and eyes. Please wear gloves while handling. Refer to SDS for more information.
- **Disposal:** Dispose of unused Midori Green Xtra concentrate, as well as containers and Agarose gels containing traces of Midori Green Xtra stain, in an approved waste disposal facility.